

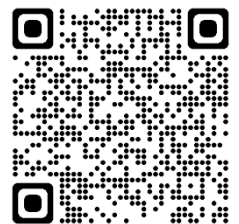
Blue Bell Woods Day Nursery

Full Day Care for
precious little ones
aged 6 weeks to
5 years.

Blue Bell Woods Day
Nursery,
Monks Road,
Binley Woods,
Coventry.
CV3 2BQ

Tel: 02476 543785

Email: bluebellwoodsdaynursery@gmail.com



Welcome



At Blue Bell Woods Day Nursery...

...we provide a caring, stimulating and adventurous environment in which your little explorers will grow, learn and thrive.

Children are born ready, able and eager to learn. We offer high quality care and an ambitious curriculum. Our nursery practitioners enjoy spending time with each child and provide an enabling environment for high quality play.

We support all children to follow their interests and build on their next steps for learning.

Opening Times

Monday to Friday:
7.45am ~ 6.00pm

Morning Session:
7.45am ~ 1.00pm

Afternoon Session:
1.00pm ~ 6.00pm

Closed:
Bank Holidays
& Christmas Week



Our Nursery Team

Management

Nerys Evans ~ Proprietor and Nursery Manager
Designated Safeguarding Lead, Paediatric First Aider

Qualifications: NNEB, Level 4 In Children's Care,
Learning and Development



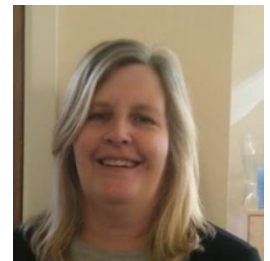
Taylor-Lee Sketchley ~ Deputy Manager
Deputy Designated Safeguarding Lead,
Paediatric First Aider

Qualifications: Level 3 Early Years Educator



Caroline Todd ~ 3rd In Charge
Paediatric First Aider

Qualifications: Level 3 Registered Sick Children's
Nurse, Level 4 Certificate in Early Years



Anita Love ~ 3rd In Charge
Special Educational Needs and Disabilities
Coordinator (SEND Co), Paediatric First Aider

Qualifications: Level 3 Diploma in Children's
Care, Learning and Development



Kat Stapleton ~ Office Manager
Data Protection Coordinator

Qualifications: NNEB, Level 4 In Children's Care,
Learning and Development



Our Nursery Team

Our Over Twos Team

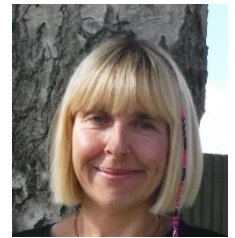
Inderjit Kaur Rai ~ Pre-School Coordinator

Qualifications: Level 3 Early Years Educator



Kate Dhillon~ Nursery Nurse
Paediatric First Aider

Qualifications: Level 3 Early Years Educator



Monica Watts ~ Nursery Nurse
Paediatric First Aider

Qualifications: : Cache Level 3 Certificate in
Supporting Teaching and Learning in Schools



Sarah Braithwaite ~ Nursery Nurse and Nursery
Cook
Paediatric First Aider

Qualifications: NNEB, Food Safety, Food Allergy
Awareness



Our Nursery Team

Baby Unit

Rachel Porter ~ Senior Nursery Nurse
Paediatric First Aider

Qualifications: NNEB



Xanthe Smith ~ Baby Unit Coordinator
Paediatric First Aid

Qualifications: Level 2 Early Years Practitioner,
working towards Level 3 Early Years Educator



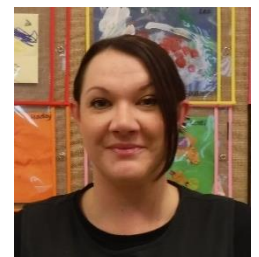
Chloe Reeves ~ Nursery Nurse
Paediatric First Aid

Qualifications: Level 2 Early Years Practitioner



Samantha Monino ~ Nursery Nurse Apprentice
Paediatric First Aid

Qualifications: Certificate: Level 3 Diploma in
the examination for Child Care, working
towards Level 3 Early Years Educator



Baby Unit

Caring for your Baby

The emotional and care needs of babies are paramount. Our Nursery Nurses work closely with families to ensure each babies' routine is followed. Care giving is responsive; milk, mealtimes, and hygiene routines are tailored to suit each baby.

Each baby has a Key Person who is in tune with them, and spends time cuddling, singing to and stimulating them.

The area is cosy and stimulating with a range of resources to intrigue and interest your little ones.

Sleep Room

We have a separate cosy area which is a calm and peaceful environment for babies to rest and sleep in.

Nursery Nurses soothe and sing to the children as they go off to sleep.

Please provide your baby with nappies, expressed breast milk/ formula milk, a spare change of clothes, any medication/creams and their comforter (if required).



Our Baby Unit accommodates up to nine babies on a ratio of at least one Nursery Nurse to three babies.



Over Twos Room

Active Learning is embedded in all aspects of nursery life, and children are encouraged by enthusiastic and patient staff who have high expectations of each child's ability to achieve.

Children interact together and learn social skills, while taking part in exciting educational opportunities.

The Over Twos room accommodates up to 24 children:

Toddlers (aged 2-3 years)

Ratio: 1 adult to 4 children

Pre-School (aged 3-4 years)

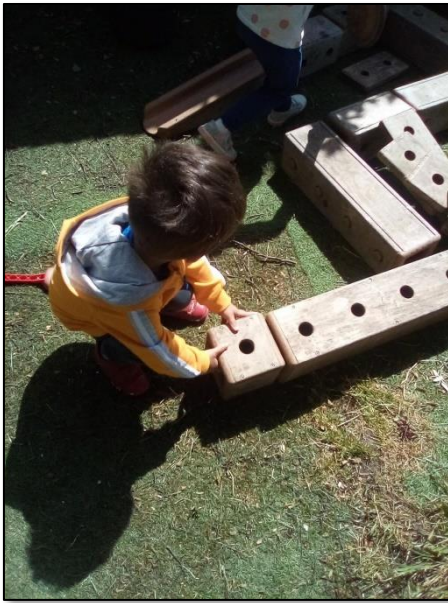
Ratio: 1 adult to 8 children

Each child has their own Key Person who knows them well and works closely with families.

'Communication and language are a key focus area. There is constant chatter within the setting as children talk to staff and their friends. Toddlers listen to animated stories under the shade of a tree in the garden. Pre-school children use props to participate in story time sessions focusing on the language of emotions.' Ofsted, 2023

Blue Bell Woods Garden

Outside play and learning takes place all year round at Blue Bell Woods; all children have access to our large garden and range of resources.



Children can practise gross motor skills, co-ordination and balance; they learn to climb, slide and jump with increasing confidence and ability, in a safe and supervised environment.



Children explore nature and take part in imaginative play, construction, arts and crafts, messy play, gardening, stories, singing, dancing and much more! There are sheltered areas and a designated area for the babies.

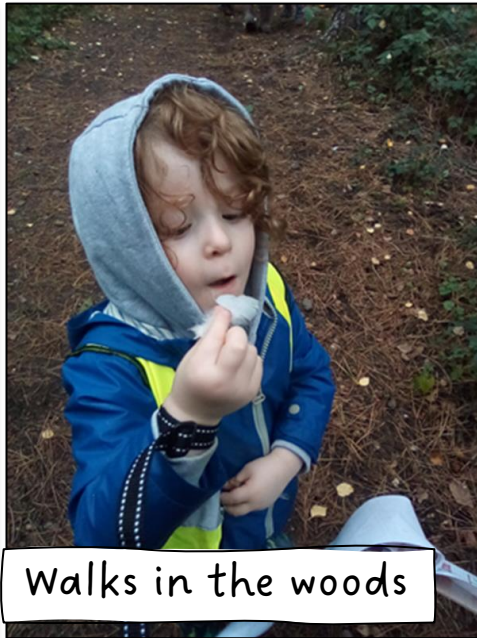
'...children explore the well-equipped outdoor environment. They climb on climbing frames and ride balance bikes with confidence. A climbing wall provides further challenge...'
Ofsted, 2023

Active Learners

At Blue Bell Woods, we offer a wide range of extra activities and experiences to keep your child stimulated, curious and eager to learn. We provide a rich, varied and exciting educational programme that babies and children can participate in the fully.



Gardening



Walks in the woods



Woodwork

'Staff provide a range of activities to stimulate children's curiosity and promote development.' Ofsted, 2023



We use the Letters and Sounds programme as part of our curriculum to build children's speaking and listening skills.

Meals and snacks

- ✓ All-inclusive meals, snacks and drinks.
- ✓ Meals freshly cooked on the premises.
- ✓ We cater for all dietary needs.

Example Breakfast Choices
Cereal, porridge, toast, fruit

Snacks and drinks
Fruit, water, cow's milk (or dairy free alternatives)

Example lunch options
Tomato and cheese pasta bake
Sausage and bean casserole
Jacket potato with tuna
Meals are served with seasonal vegetables

Example Tea Choices
Home-made Soup, Sandwiches, Salad,
Wraps, Dips, Crackers, Meats, Cheese

Mealtimes are a social time where children sit and eat together, enjoying each others' company. Staff use this time to promote independence, manners and language skills.

We work closely with families to fully support babies with weaning. We blend down fresh vegetables and gradually introduce new foods and finger foods at your request. Our Nursery Nurses are responsive to each child's needs.

We use the FAMLY app to keep you up to date with information about meal times, sleep, nappy changes, and medication.

FOOD HYGIENE RATING

0 1 2 3 4 5

VERY GOOD



'Staff encourage children to become increasingly independent. Babies feed themselves, while toddlers and pre-school children select their own snacks and serve themselves during snack time. Older children clear away their own plates when finished, which helps build further on their independence skills in preparation for moving on to school.'

Ofsted, 2023

Safeguarding at Blue Bell Woods

At Blue Bell Woods, we believe the safety and well-being of each child is paramount.

Our robust Safeguarding, Child Protection, Health and Safety and Behaviour Management policies detail the overarching principles to support a safe and secure environment where children can thrive.

Who should I take my concerns to?

Our named Designated Safeguarding Leads (DSLs) are Nerys Evans and Taylor-Lee Sketchley. They provide support to staff members to carry out their safeguarding duties.

Our Commitment to Safeguarding

Under the Education Act 2002, we must make arrangements to safeguard and promote the welfare of children. Parents/carers should know that the law (Children Act 1989) requires all staff to pass on information which gives rise to a concern about a child's welfare.

Staff will seek, in general, to discuss any concerns with the parent/carer and discuss the need to make a referral to Children's Social Care if that is considered necessary.

This will only be done where such discussion will not place the child at increased risk of significant harm or cause undue delay.

We will seek advice from Children's Social Care when they have reasonable cause to suspect a child may be suffering or likely to suffer significant harm. Occasionally, concerns are passed on which are later found to be unfounded. Parents/carers will appreciate that the Designated Safeguarding Lead carries out their responsibilities in accordance with the law and acts in the best interests of all children.

'The arrangements for safeguarding are effective. Leaders and managers have robust policies and procedures in place to ensure the setting is safe and secure. Staff have a shared understanding of their responsibility to keep children safe.' Ofsted, 2023



Nerys Evans
DSL



Taylor-Lee Sketchley
Deputy DSL



Your Child's Learning Journey

Your child's achievements, interests and milestones are closely observed by their Key Person throughout their time at nursery. We capture the interest of each child in the present moment.

Young children have a natural desire to learn, explore and question. We carefully observe children and note the progress each child makes. We share photographs via the FAMLY app in an online Learning Journey.

We ask families to contribute to the Learning Journey by sharing children's current interests, family celebrations and accomplishments.

Families are also invited to attend Parent Evenings and social events throughout the year.

Our Curriculum

We plan a rich curriculum based on the children's interests, following the educational programmes of the Early Years Foundation Stage (EYFS).

The prime areas of learning in the EYFS are:

- communication and language
- physical development
- personal, social and emotional development

The specific areas of learning in the EYFS are:

- literacy
- mathematics
- understanding the world
- expressive arts and design

'Staff know children well. They work closely with parents to identify children's starting points and monitor children's progress. This ensures that any gaps in children's learning are identified early and their next developmental steps are planned for.' Ofsted, 2023

Contact us

Email

bluebellwoodsdaynursery@gmail.com



Website

[Blue Bell Woods Day Nursery
Contact Us](#)

Telephone

02476 543785

